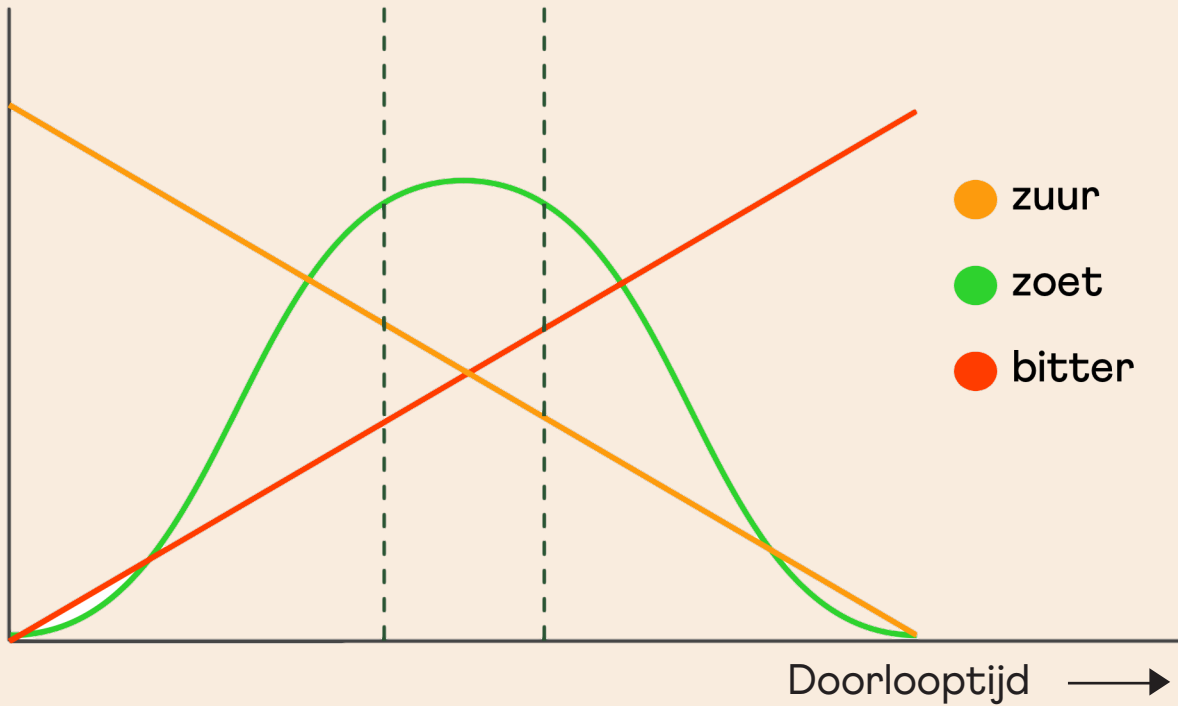


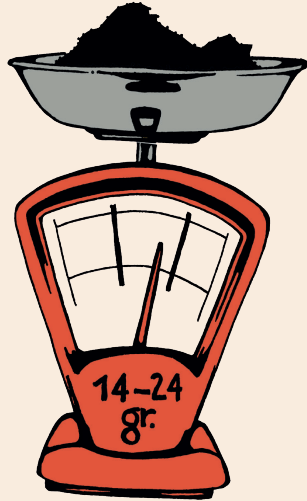
Smaken die we in de koffie proeven



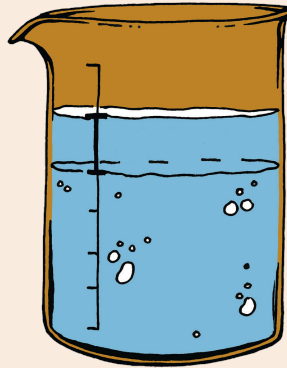
- zuur
- zoet
- bitter



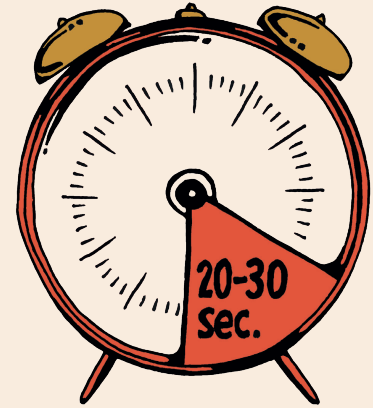
Espresso recept:



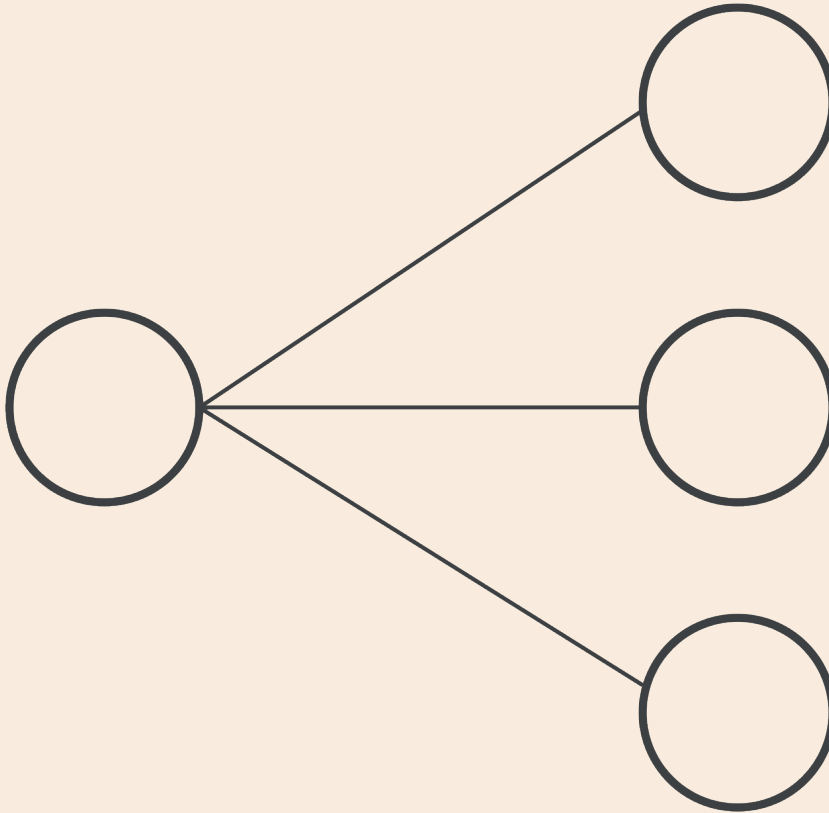
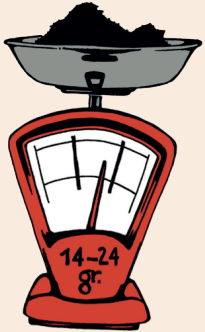
Gemalen koffie
IN



Gezette koffie
UIT



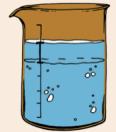
Doorlooptijd



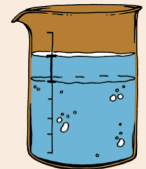
1 : 2



1 : 2,5



1 : 3



Koffie in: Koffie uit:	Stand van de molen	Doorlooptijd:	Smaak notities en opmerkingen
In: Uit:			
In: Uit:			
In: Uit:			
In: Uit:			
In: Uit:			